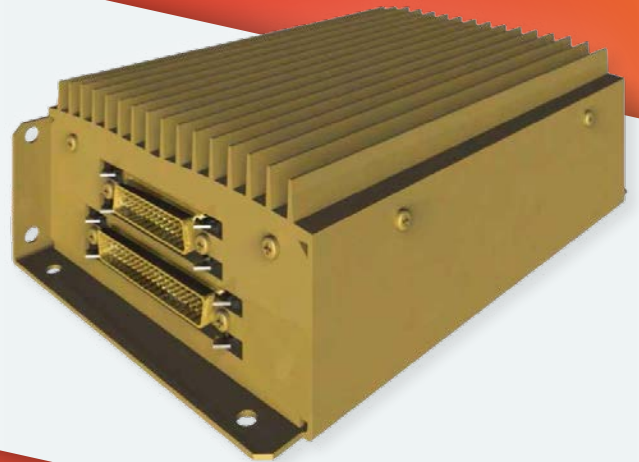




# 251

Paging/Passenger Speaker Amplifier



# 251

## Paging/Passenger Speaker Amplifier

### PRODUCT FEATURES

Canyon's 251 is a remote-mounted, two-channel Passenger Speaker Amplifier. The primary function of the component is passenger PA briefing. Each speaker channel can provide 40 watts into a 1 ohm load or 30 watts into 2 ohms. Each speaker output is internally protected against open and short circuits, as well as over-temperature conditions.

The unit features a remote electronic speaker mute control, which can be used to reduce the volume upon landing when connected to the aircraft's Weight-On-Wheels switch (when lower cabin ambient noise levels are present). The speaker mute control drops the speaker level by -6 dB when grounded.

The design incorporates a musical chime tone to alert passengers of a change to the Fasten Seat Belt or No Smoking sign status. The unit also features a Cabin Call ringer tone for the Cockpit to Cabin intercom system.

Left and right monitor outputs are provided for connecting to a cabin headphone amplifier or headphone audio distribution system. The monitor outputs carry the same audio signals as the speaker outputs. Stereo audio inputs are provided for cabin background music when desired.



### Technical Specifications

#### Electrical

Isolation between channels: 60 dB, minimum

Output noise: Greater than 75 dB below rated, all outputs

Power supply: 28 Vdc, 5 amp maximum

#### Mechanical

Height: 2.47" / 6.27 cm

Width: 4.90" / 12.44 cm

Length: 7.80" / 19.81 cm  
2.50" / 6.35 cm connector clearance

Weight: 2.60 lb. / 1.17 kg

#### Environmental

Temperature: -67° to 158° F  
-55° to 70° C

Altitude: 70,000 ft. / 21,336 M

#### TSO C50c Compliance

DO160C Env. Cat. [A2F2]-BA(CL)  
XXXXXX[BZ]AAATZ[XXC2]XX